

AMTEC

Applied Manufacturing Technologies, Inc.

POLARIZED & PROGRESSIVE LENS MARKING SYSTEMS



AMTEC Introduces the next generation **Lens Marking Equipment**. This bench top unit is specially designed for Optical Laboratory applications. It consist of a pad printer with the capacity to “**Inspect and Print on Optical & Ophthalmic Lenses**”. This user friendly State of the Art Printer with the most desirable feature to view Fiducial marks within clear and tinted, Progressive & Transition lenses using our patented **High Res. Vision Inspection System** or optional **SMART VISION SYSTEM** for Automatic inspection.

Following **Lens Marking System** configurations are available:

Model #	LM50-1	LM75-1	LM115-1	LM50-2	LM75-2	LM115-2
Cup size Ø	60 mm	90 mm	130 mm	60 mm	90 mm	130 mm
Print size Ø	50 mm	80 mm	115 mm	50 mm	80 mm	115 mm
# lens	1	1	1	2	2	2
Speed pph	200 - 300	200 - 300	200 - 300	150 - 200	150 - 200	150 - 200

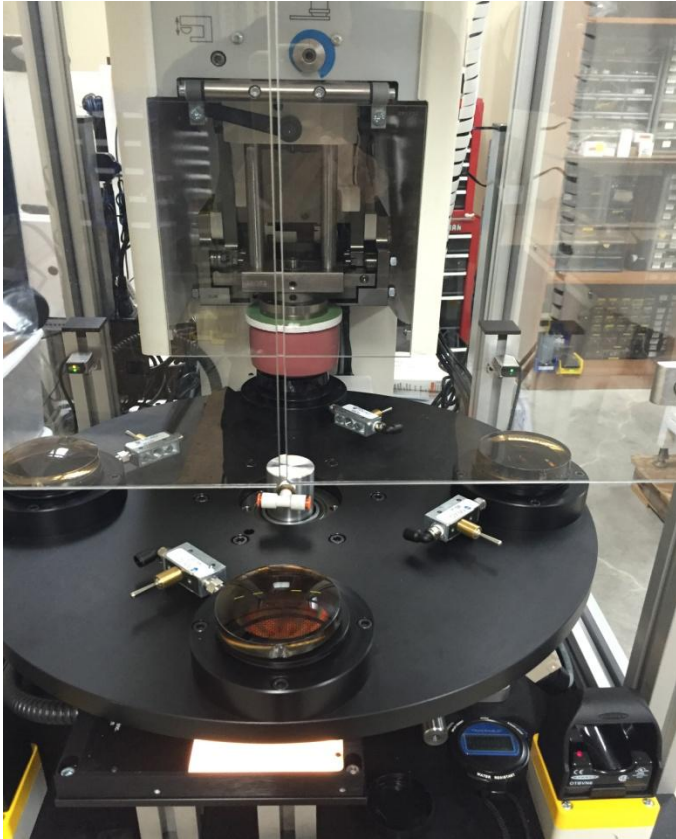
*Note: Higher capacity machine available with optional rotary index table

AMTEC - Applied Manufacturing Technologies, Inc.

Website: www.amtecinc.com

E-mail: sales@amtecinc.com

HIGH SPEED LENS MARKING



Polarized and/or Progressive Lens Marking System with following features:

- * Vision system with 1 or 2 cameras.
- * Back Lighting w/adjustable intensity for clear & tinted lens
- * Lens Clamping mechanism; mechanical/vacuum
- * Maximum print area of 50mm (2"), 75mm (3") or 115mm (4.5") Ø
- * Print 1 or 2 lens at a time
- * Manual/Automatic alignment using "**High Res. Vision System**"
- * Automatic lens orientation with software interface (Optional).
- * Surface Pre-Treat for enhanced adhesion; (Optional).
- * Drying station for fast curing of Epoxy & UV ink.
- * Auto-load and Auto-unload with Pick and Place

System functions consist of any combinations of the above features:

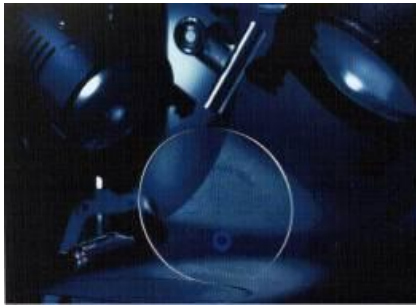
- * Linear Shuttle with Vision system and Printing machine.
- * Rotary Index System (2 or 4 stations) w/vision system and printer for higher output .
- * Number of stations is a function of number of processes required.
- * Single or Multiple Lens printing.

AMTEC - Applied Manufacturing Technologies, Inc.

Website: www.amtecinc.com

E-mail: sales@amtecinc.com

LENS LASER ENGRAVING SYSTEMS



POTENTIAL APPLICATIONS:

- Fiducial (water) marks on Progressive lens.
- Special invisible markings for counterfeit protection.
- Serial #, Bar Code and 2D matrix.
- Customization for labs, customers etc.



Laser Marking System with the following features:

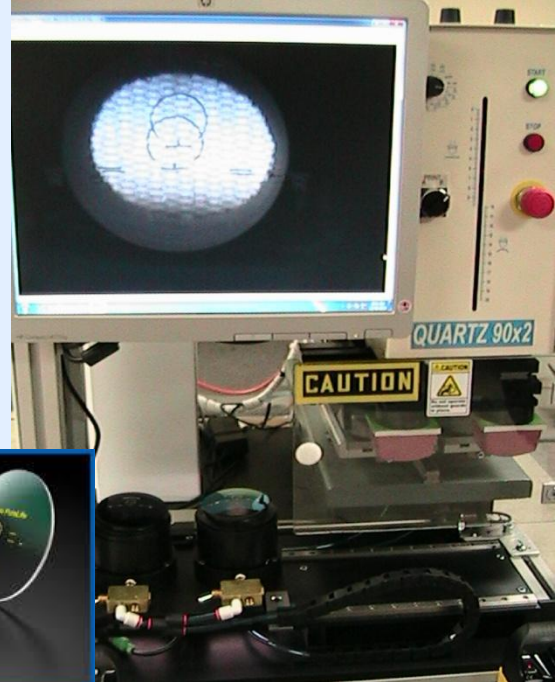
- Laser – with fine beam for high resolution in print quality.
- Marking speeds of up to 8,000 mm/sec.
- High Speed, High Accuracy Precision Scan Head with galvanometer motors.
- Field of View lens: 4" to 12"; other sizes are available
- Easy access to CAD and graphics program e.g. dwg; dxf; ai; jpg; tif; pcx; bmp etc.
- Alphanumeric and Full Graphics marking capability.
- Linear, Circular and Angular/Reverse marking capability.
- Multiple true type font selection; Individual and dot matrix fonts.
- Barcodes, 2D matrix and OCR are **standard features**, not options;
- Graphics, logos, symbols, Sequential and Batch numbering etc.
- On-the-fly marking.
- User friendly software.
- Self Diagnostic laser parameters visible on the computer screen.

AMTEC - Applied Manufacturing Technologies, Inc.

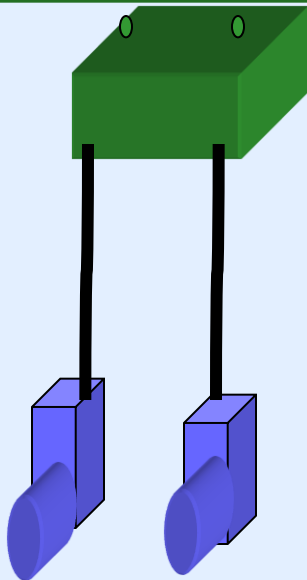
Website: www.amtecinc.com

E-mail: sales@amtecinc.com

VISION SYSTEM for LENS MARKING MACHINE



Controller w/software to detect and orient lens



Cameras

Digital Image Generator



Monitor to display axis of polarization & water marks

For more info. Please contact Sales Dept.

Applied Manufacturing Technologies, Inc.

1464 N. Hundley Street, Anaheim, CA 92806

Tel: (888) 634-1143; (714) 630-9530; Fax: (714) 630-9531

Website: www.amtecinc.com

E-mail: sales@amtecinc.com

AMTEC

