

# AMTEC

## Applied Manufacturing Technologies, Inc.

### CO<sub>2</sub> Lasers

CO<sub>2</sub> lasers creates permanent and high resolution marks on plastics, metals, wood, glass and other materials.



The ALLPRINT CS laser coding system delivers clean, permanent codes on a wide variety of materials. The ALLPRINT CS meets the highest demands for permanent, clean, reliable, flexible, and economic product marking.

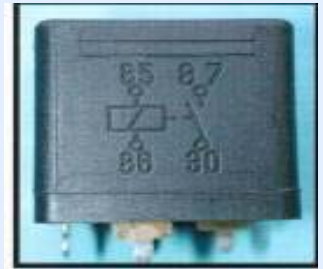
With a small footprint and easy to position laser head, the ALLPRINT CS system provides simple integration for nearly any production environment. The ALLPRINT CS is ideal for printing text, numbers, logos, graphics and codes on a range of products including cartons, electronics and automotive goods.

Our Smart Navigator hand controller and our Smart Job software allow a user-friendly, innovative graphical user interface for text, codes and graphics. ALLPRINT CS is the compact solution to your marking requirements.

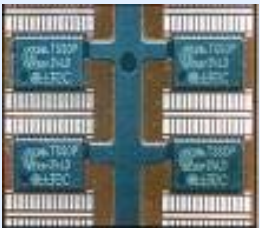
### Class IV for Laser Marker

### Features of CO<sub>2</sub> Lasers

- Create permanent codes for lifetime traceability
- Solve changing product identification needs
- Ultimate reliability ensures high uptime
- Integrates easily with automated systems
- Reduce manufacturing costs
- Expand coding option



### Samples of CO<sub>2</sub> Lasers: Electronics, Pharmaceutical, Cosmetics & Packaging



### Specifications

#### LASER

Laser Tube: Power range with 10, 30, 100, 250, 500 up to 4,000 watts.

Beam Deflection: Steered Beam

Focusing: • Precision lens system

- Focal length 100/200/300 mm, options

## SOFTWARE

**Smart Quick:**

- For system configuration and operation with Smart Navigator directly in the line
- Full diagnostic packaging for automatic system control and self-diagnostics

**Smart Job:**

- Graphical user interface under Windows for generation of layouts/working programs on external PCs
- Full feature text/data/graphics/parameter editor
- Optimized for electronic components marking
- Easy access to standard CAD and graphics programs by convenient import functions
- WYSIWYG

**Language Capabilities:** Dutch, English, French, German, Italian, Spanish and options

## CONTROLLER

**Smart Navigator:**

- Hand-held remote control
- Data transport/transfer between ALLPRINT CS and external devices(PC, host computer, etc)

**Remote Communication:**

- RS232/422 interfaces
- Optional Ethernet interface for PC networks, CAN interface
- Bar code reader input
- Shaft encoder input
- Up to 40 input/output ports for product detectors, machine/user interlocks, alarm signals, remote start/stop, etc

**Printhead:** Dual head option

## UTILITIES

**Cooling System:** Air cooled

**Environment:**

- Temperature range 40-105° F (5-40° C)
- Humidity 10%-90%, Non-condensing

**Electrical Requirements:** 110/230 V, ~50/60 Hz, 0.35/0.70 kW (10 watt/25 watt version)

**Dimensions :** Supply/control unit : D 17.4x H 10.5x W 17.6 inches

**Weight:** 10 watt: 55lbs. (25Kg); 25 watt: 78lbs. (35kg)



**Email : [sales@amtecinc.com](mailto:sales@amtecinc.com)**

**APPLIED MANUFACTURING TECHNOLOGIES, INC.**

**3565 E. Enterprise Drive, Anaheim, CA 92807**

**Tel: 714-630-9530 Fax: 714-630-9531 Toll Free: 888-634-9531**